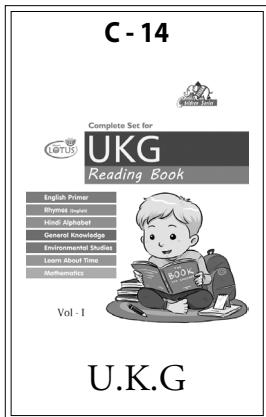


Name : Section : Roll No :



UNIT TEST - I

GENERAL KNOWLEDGE

MARKS **25**

Class : U.K.G.

Time : 1 Hour

Syllabus

Seasons (To) Places we visit

School Stamp

I. Answer the following questions.

(6 × 2 = 12)

1. Which clothes we wear in rainy season ?

Ans.

2. Which clothes we wear in summer season ?

Ans.

3. Which clothes we wear in winter season ?

Ans.

4. Where we save money ?

Ans.

5. Who catches thieves and robbers ?

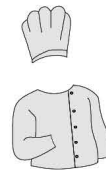
Ans.

6. Who teach lessons in our class ?

Ans.

II. Match the people to their correct uniforms.

(4 × 1 = 4)



III. Identify the pictures and name them.

(4 × 1 = 4)



IV. Write the missing letters.

(5 × 1 = 5)

1. mi__k

2. op__n

3. c__ld

4. s___k

5. cl___s

★★★★★