

UNIT TEST - I

UKG - ENGLISH PRIMER (B)

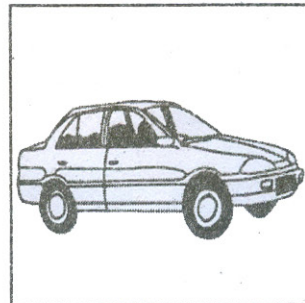
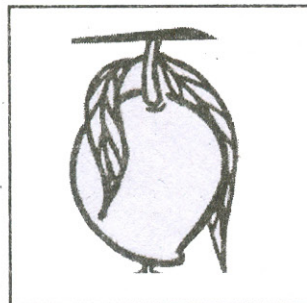
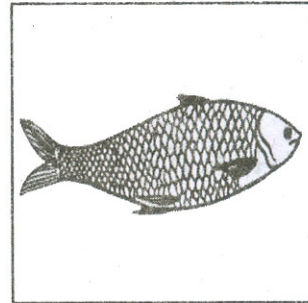
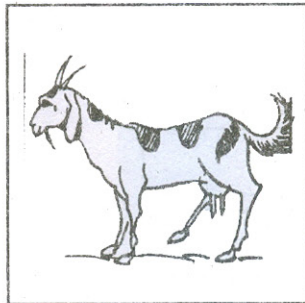
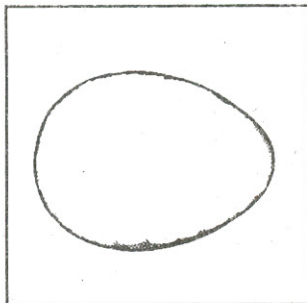
Syllabus : Individual Book Lessons 1 & 2

25

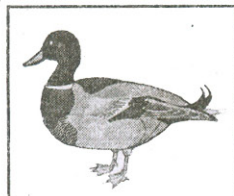
Max. Marks : 25

Name : Section : Roll No:

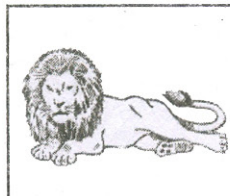
I. Look at the picture and write the word : $6 \times 1 = 6$



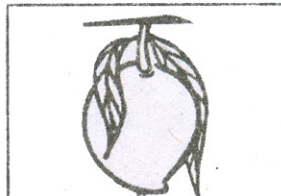
II. Look at the picture and write the word : $4 \times 1 = 4$



D K



L N



M N O



E G E

III. Look at the picture and write the first letter in the box given : $4 \times 1 = 4$



IV. Make correct words :

$6 \times 1 = 6$

1. O O Z

2. N A T

3. N A V

4. A F N

5. S B U

6. L W O

V. Match the capital letters with its small letters : $5 \times 1 = 5$

(1) F

j

(2) M

r

(3) J

f

(4) Q

m

(5) R

q