

C-16

Lotus
Computers
Text Book

SUMMATIVE ASSESSMENT - III

Syllabus:
(Chapter : 1 to 10
Pg. Nos : 5-109)

Class - IV :: Computer Easy Learning

Time : 2½ Hour

Max. Marks : 50

50

Name :

Class :

Section :

Roll No.

I. Answer the following questions.

[8 x 3 = 24]

- 1) What is the difference between input devices and output devices ? Give two examples of each.
- 2) What do you mean by hardware, software and operating system ?
- 3) Write the steps to use the replace option in MS. word.
- 4) Give the difference between running and executing a procedure. Explain how you will execute a procedure in LOGO.
- 5) What will you use the windows media player for ?
- 6) Write the uses of internet.
- 7) Explain the importance of using secondary storage devices.
- 8) Write the steps to add the real rainbow effect in a Tux paint drawing.

II. State True or False.

[8 x 1 = 8]

- 1) Software and hardware are useless without each other.
- 2) Numbered and bulleted lists cannot be created in MS Word.
- 3) "Slide 1" is the name of the file that appears when a blank presentation is created in MS powerpoint.
- 4) Graphics is an element of multimedia.
- 5) The last page of the website is the homepage.
- 6) Motherboard connects all the parts of a computer to each other.
- 7) The user can modify colour and transparency of borders of open windows.
- 8) We can apply different effects by using Magic tool.

Note : Cut along the marking to avoid un-even cutting or torn

III. Fill in the blanks.

[7 x 1 = 7]

- 1) is the keyboard shortcut for making the selected text appear in bold.
- 2) The first part of a Logo procedure is
- 3) industry uses multimedia technology.
- 4) A collection of websites around the world is called
- 5) Undo and redo commands are present on the tool bar.
- 6) cannot function without the software.
- 7) USB drives are also known as

IV. Choose the correct answer.

(7 x 1 = 7)

- 1) Which of the following storage device has maximum storage capacity ?
a) Thumb Drive b) Hard Disk
c) DVD d) CD
- 2) A still or moving picture displayed on the screen when the mouse or keyboard aren't touched for a while is known as :
a) Desktop b) Wall paper
c) Screen saver d) On-screen keyboard
- 3) We can add the foamy effect to the water by using which effect ?
a) Drip b) Smudge
c) Foam d) None of these
- 4) MS word is part of :
a) Microsoft Games package
b) Microsoft office suite
c) Windows movie maker
d) Windows live messenger

Note : Cut along the marking to avoid un-even cutting or torn

5) The B, U and I buttons can be found in the of the tab.

a) Font group, Review b) Styles group, Home

c) Font group, Home d) Paragraph group, Home

6) What should the name of a LOGO procedure always begin with ?

a) + sign b) Blank space

c) Letter d) Number

7) Which button will you use to reload a page ?

a) Back b) Forward

c) Refresh d) None of these

V. Match the following.

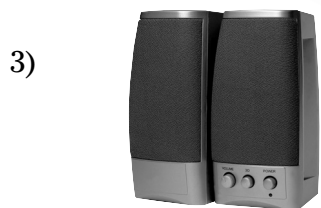
[4 x 1 = 4]



() (a) Rainbow Effect



() (b) Digital Camera



() (c) New Tool Icon



() (d) Speakers

